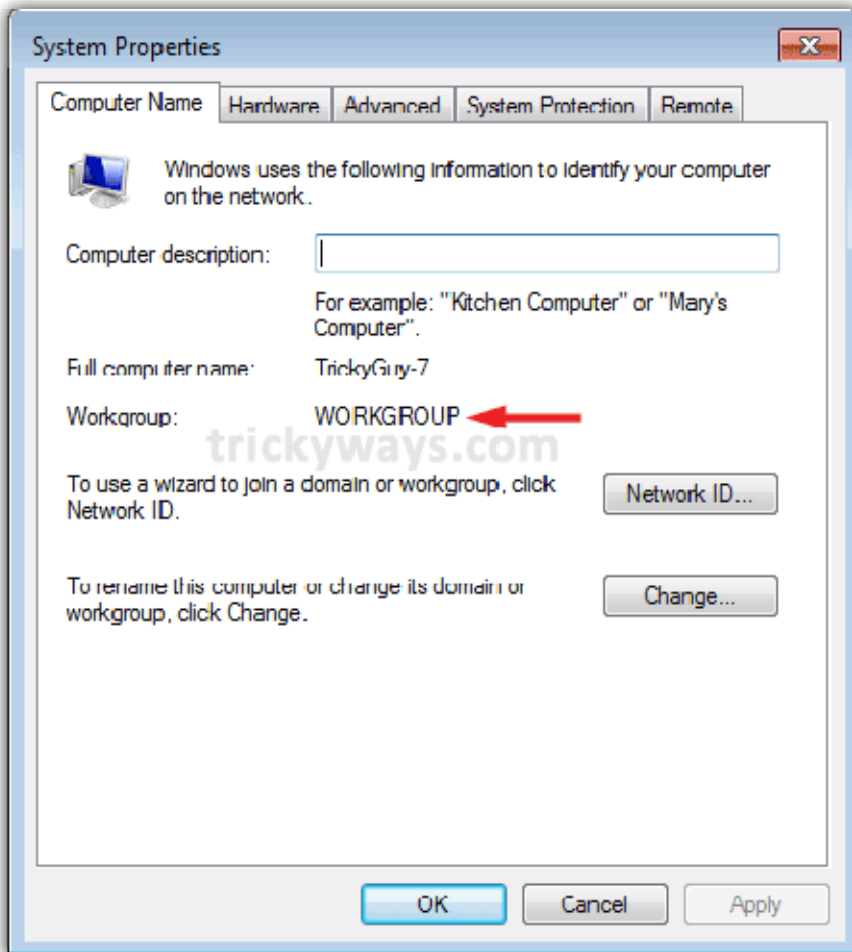


1. Sharing Files between PC and HV335T

Make sure your PC has set up the following settings.

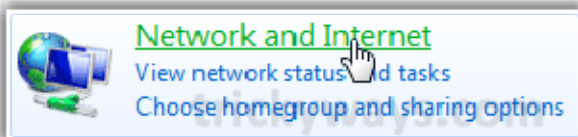
1. Settings

Make sure HV335T are at Workgroup (by default it is also named WORKGROUP)

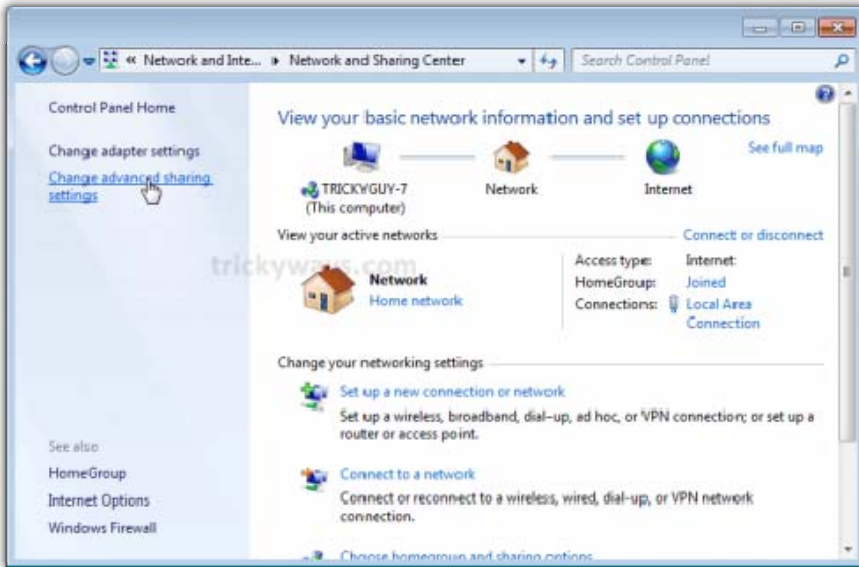


From your Windows 7/Vista machine, go to:

Control Panel > Network and Internet > Network and Sharing Center

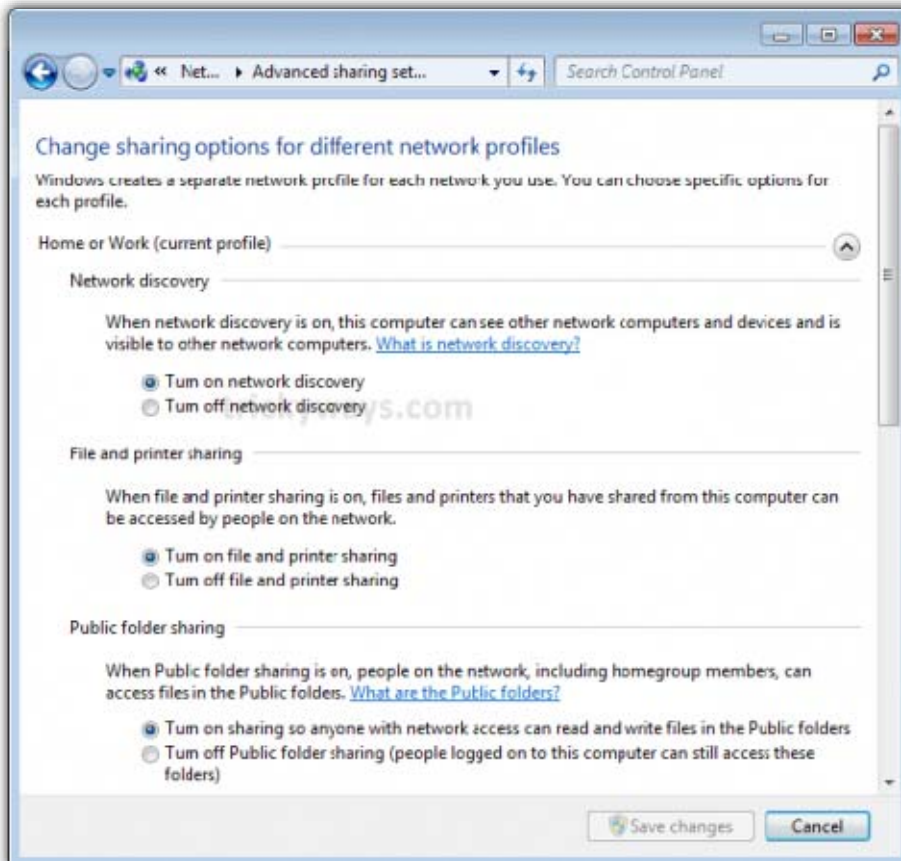


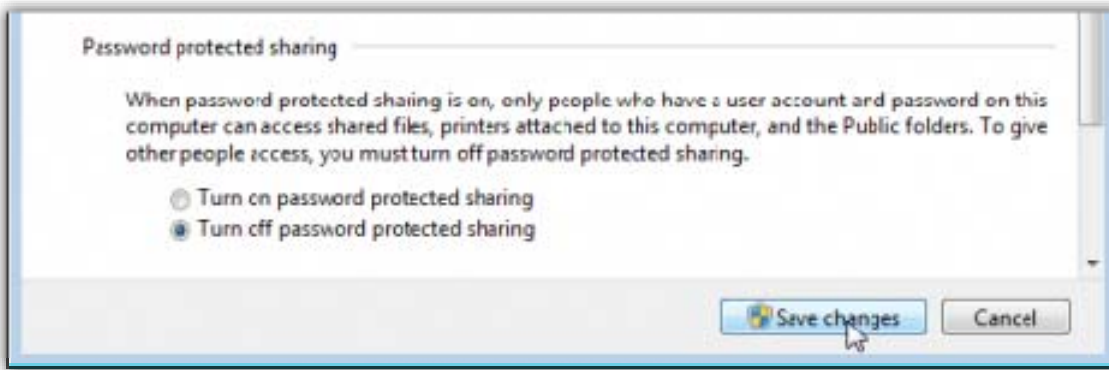
Click on **Change advanced sharing settings (for Windows 7 machine)**.



Select **“Turn on network discovery”** **“Turn on file and printer sharing”** **“Turn on sharing so anyone with network access can read and write files in the Public folders”**

Scroll down to the bottom of the list and choose **“turn off password protection”**





(For Vista machine you will see the following)

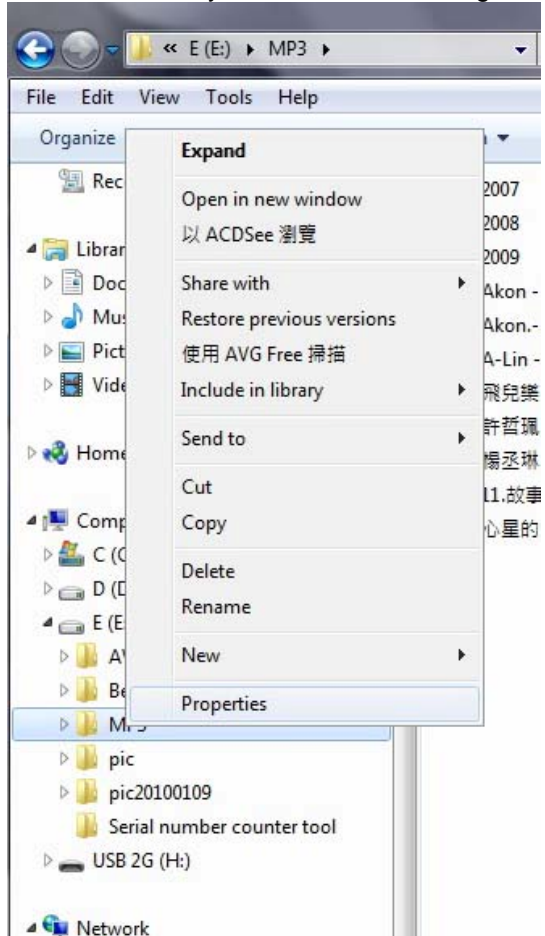


“Turn On network discovery” “Turn On File sharing” “Public folder sharing is optional” “Printer sharing can be Off” “Password protected sharing has to be Off” “Media sharing is optional”

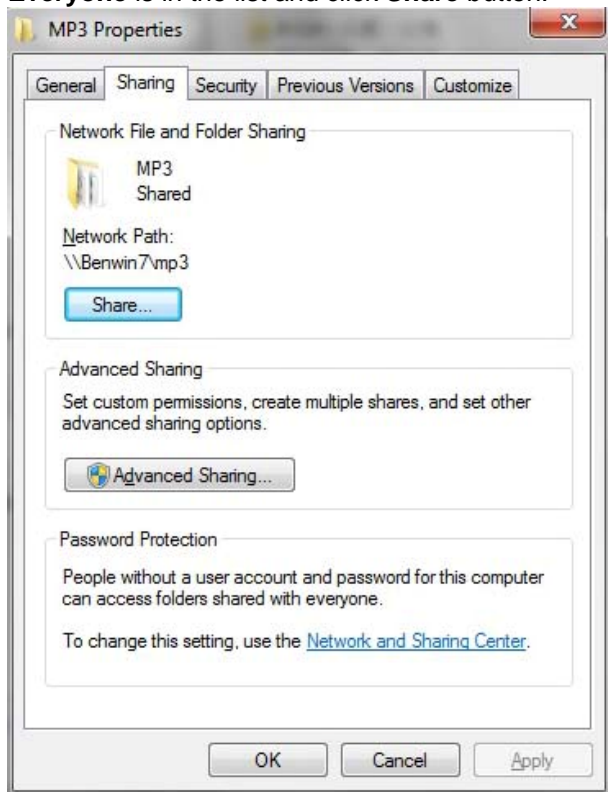
2. Sharing folders

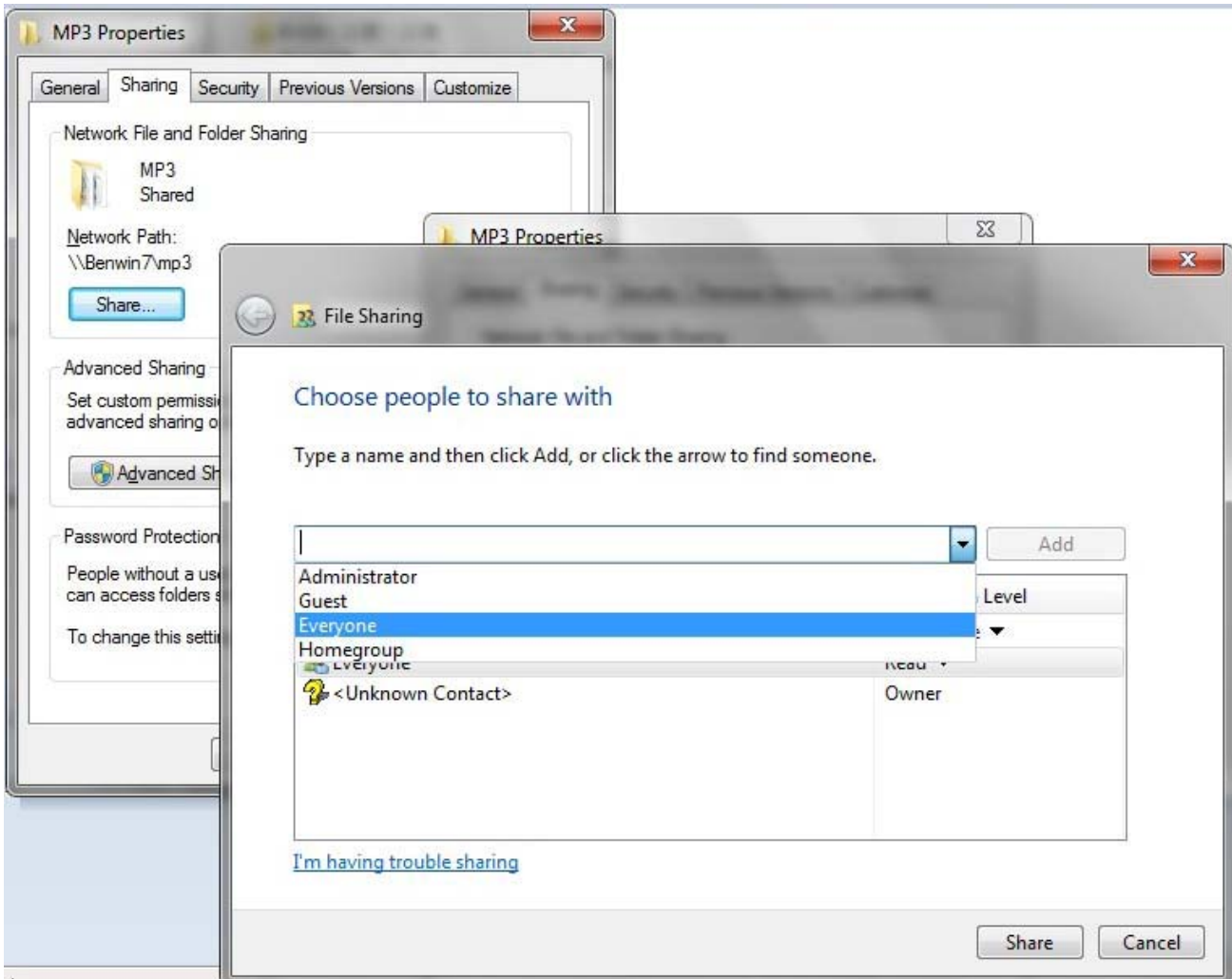
To share a folder and make it visible on the net, you need to set up the following

Select the folder you like to share and right click with your mouse, then select Properties



Go to tab **Sharing** and click **Share**. Scroll down the selection and choose **Everyone** and click **Add**. Make sure that **Everyone** is in the list and click **Share** button.



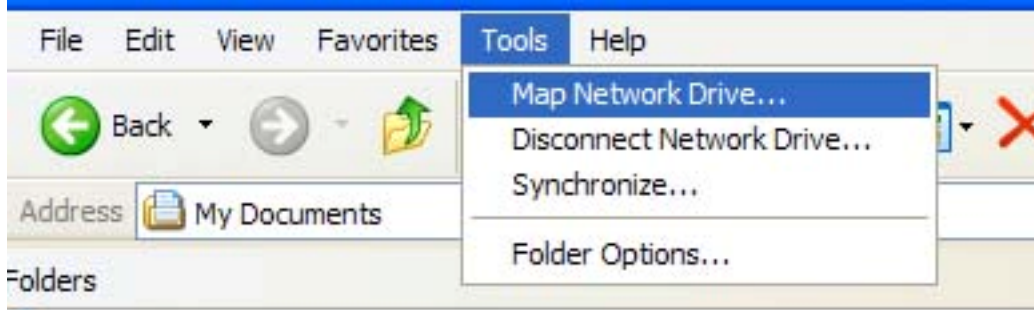


2. How to connect HV335T from PC and copy files to HV335T via network?

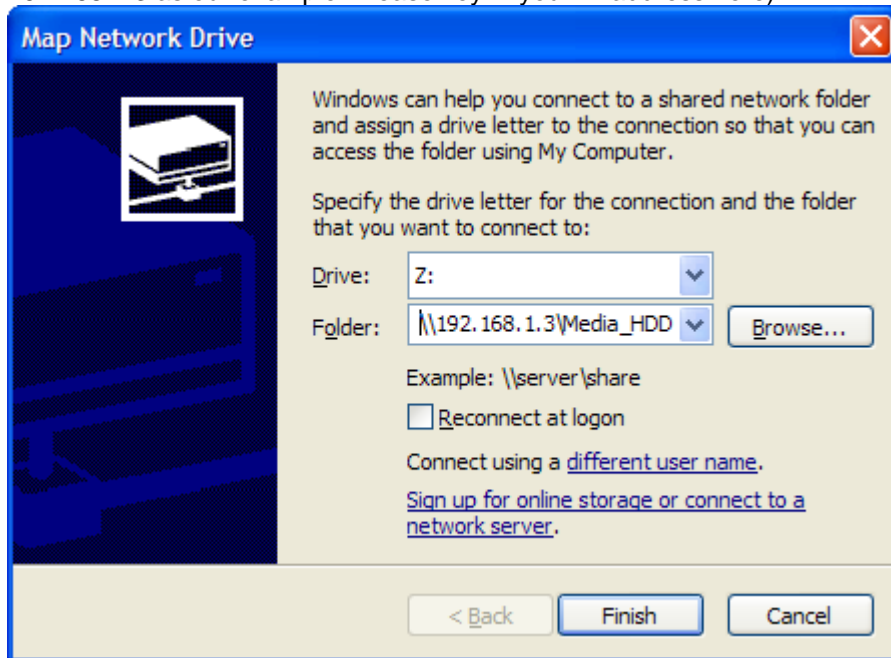
To connect HV335T from your PC you have to map HV335T first.

** HV335T also needs to be switch on completely. Please make sure you have pressed the power on/off button and the power button from the remote controller.

1. Know which IP address your HV335T is using. You can check that in the Setting>Network of HV335T.
2. then open your Windows Explorer and go to: **Tools> Map Network Drive**



Assign the drive letter you like to use and key in [\\192.168.1.3\MEDIA_HDD](#) at the folder section and click Finish. (we take 192.168.1.3 as our example. Please key in your IP address here)



An extra Drive letter will appear in your Windows Explorer of My Computer.

If you have difficulty with checking the IP address of HV335, he can download a utility called Network Scanner (free).

Info:

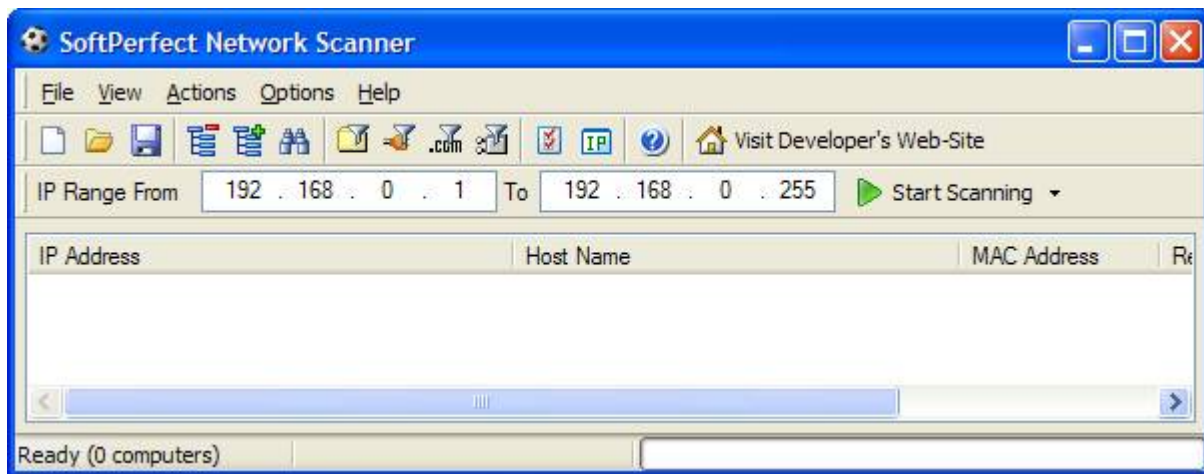
<http://www.softperfect.com/products/networkscanner/>

Download link:

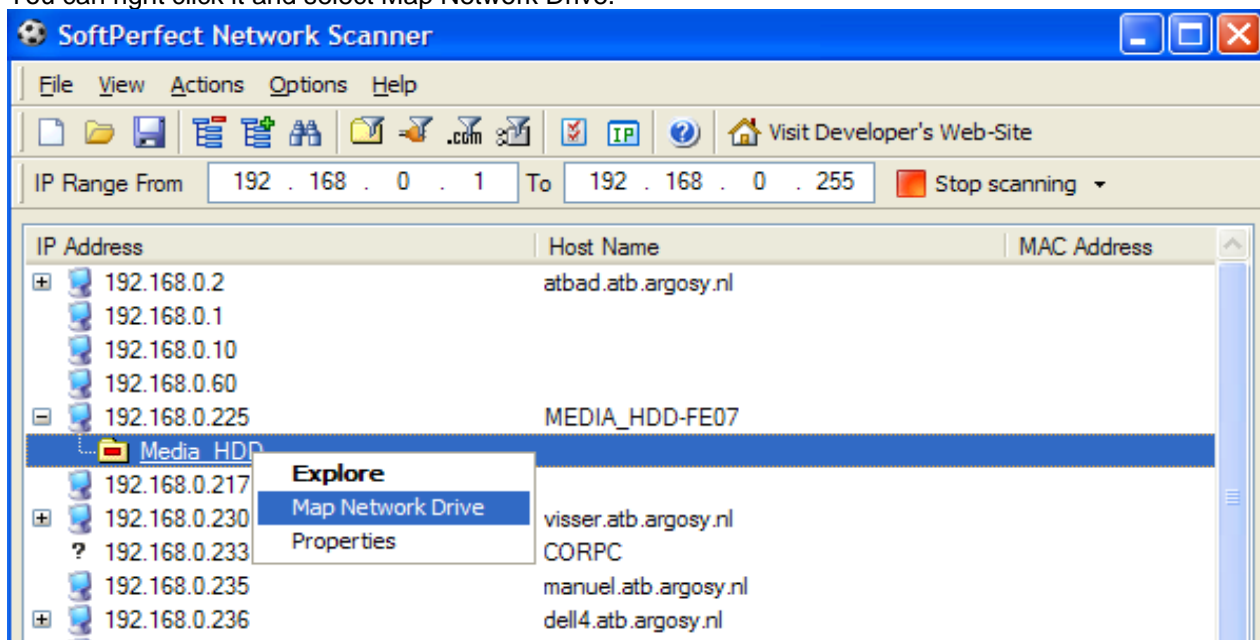
<http://www.softperfect.com/download/freeware/netscan.exe>

Check first which IP range your network is using and key in the network range you like to scan and press Start Scanning

Example: 192.168.0.1 ~ 192.168.0.255



HV335 will appear as **MEDIA_HDD-XXXX**
 You can right click it and select Map Network Drive.



A window of Map Network Drive will pop up. Click Finish and HV335T will be mapped automatically.

